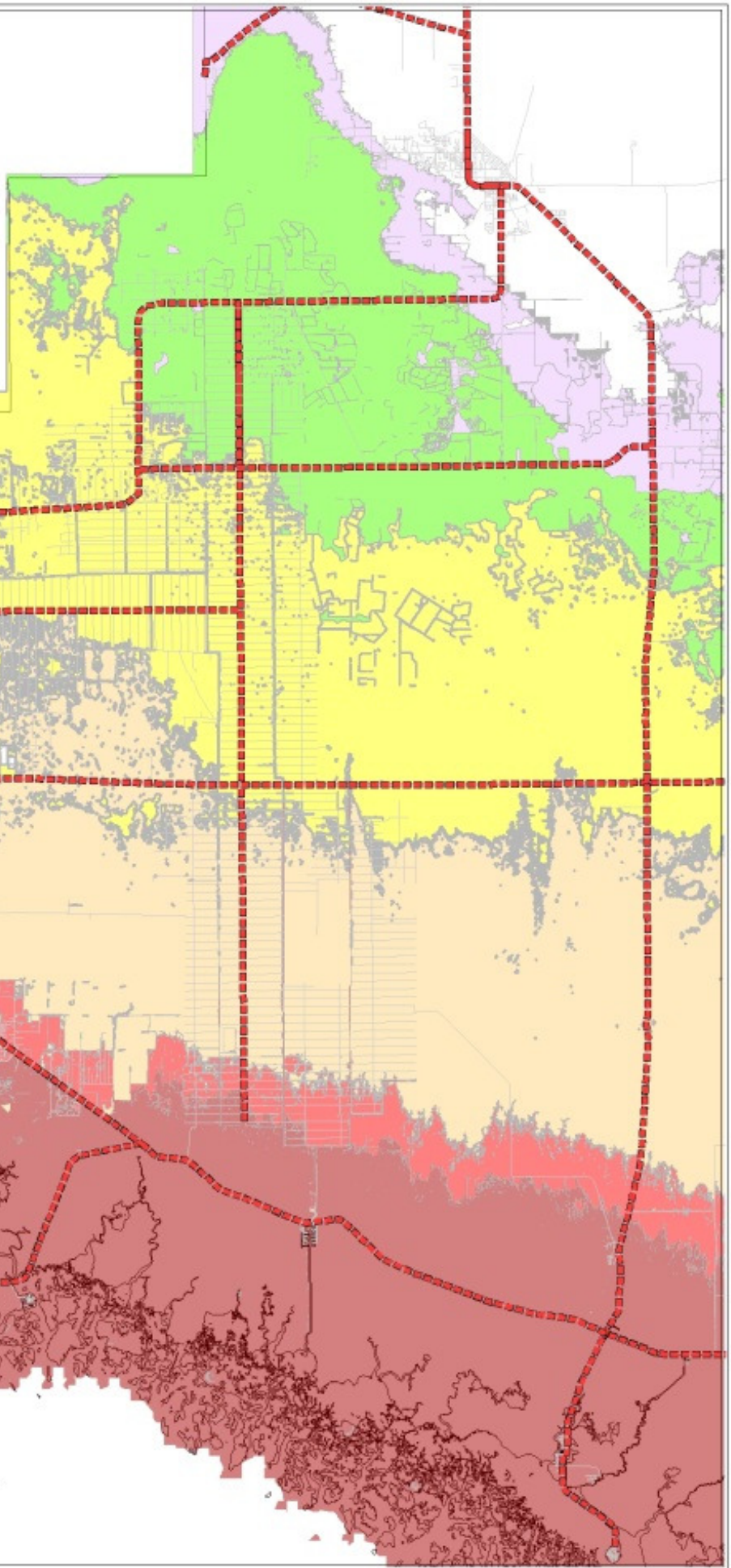


The storm surge risk map should be used for outreach, education, and awareness. This map is not appropriate for planning, mitigation, or real-time applications. No single hurricane will produce the regional flooding depicted in this map. The product is intended to capture the worst case high water value at a particular location for hurricane evacuation planning.



### Legend

----- Evacuation Routes

#### Surge Zone (New)

- TS
- A
- B
- C
- D
- E

0 5 10 Miles



Source: SW Fla Regional Evacuation Study (2010)  
Prepared by: R. Zyzolowski, Collier Co. Emergency Mgt. Dept.  
Date: 26 April 2011